



67 Gregory Parade Kotara NSW

4  1  1 

A light & bright brick Veneer & Tile home situated in an elevated position in a cul-de-sac with easterly aspect and distant views.

Features interiors in neutral shades, original ornate cornices and gleaming polished timber floorboards to enhance the bright sunny living room.

Enter from the covered front patio to the hallway, THREE bedrooms with very large main at the front, good sized second bedroom and small third bedroom all with built-ins.

Updated bathroom in period style and a brand new kitchen with dishwasher. Internal stairs to the laundry, garage and 4th bedroom/ rumpus and access to the vast sub floor space for extra storage and perhaps a cellar!!

Sloping leafy backyard. A most convenient location, easily accessible to local village shops, Westfield or Charlestown.

ZONED FOR NEW LAMBTON PUBLIC SCHOOL

6 or 12 month lease

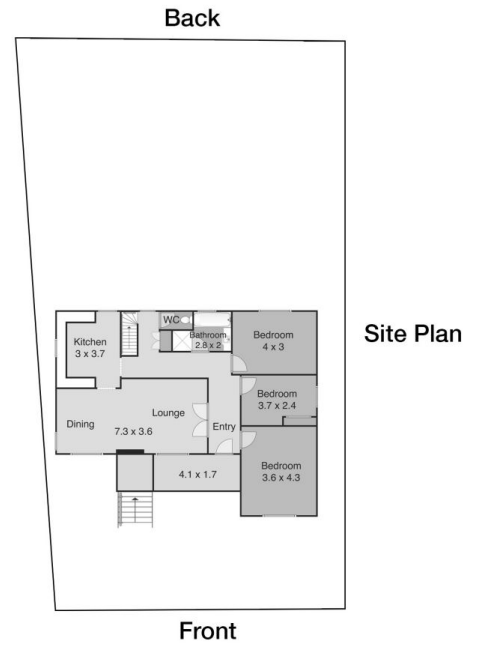
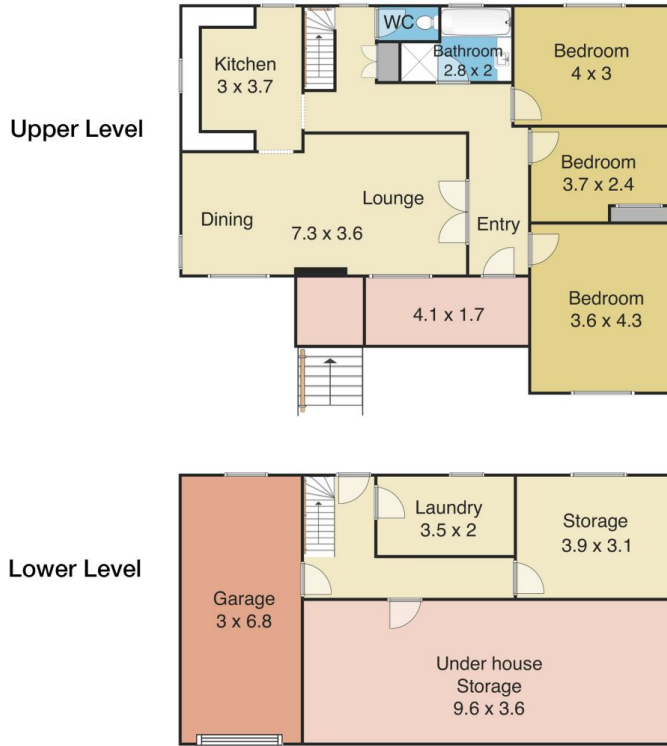
Pets on application - backyard NOT Fenced

Land Size : 590 sqm

View : <https://www.crawfordrealestate.com.au/lease/nsw/newcastle-region/kotara/residential/house/5661340>



Kerry Robertson
02 4957 6166



67 Gregory Parade, Kotara

Measurements are approximate and are to be used only as a guide

