

142 Victoria Street Adamstown NSW

4 🚗 2 🚗 3 🚗

This freshly painted family home provides 4 BEDROOMS including the air conditioned parent's retreat upstairs incorporating an extra large bedroom with en-suite + a spacious living room with a private balcony to sit & enjoy the local views. The original cottage retains the charm with high ceilings & rich hardwood floorboards and air conditioning to living areas while extensive renovations and extensions have been sympathetically carried out to cater for the requirements of a modern family. Spotted Gum floorboards upstairs & renovated Classic Country style eat-in kitchen. Manicured established gardens & private nooks invite outdoor living with sunny north facing backyard & rear lane access to large double garage and carport. A separate office or studio completes this home.

Available 05/10/21
PETS ON APPLICATION
6 OR 12 MONTH LEASE
Online applications NOT accepted

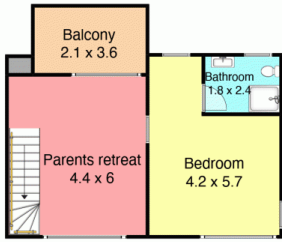
*To inspect our properties you must register so we can advise of any changes or cancellations . To register either hit the book inspection or enquire button to be advised of

Land Size : 537 sqm
View : <https://www.crawfordrealestate.com.au/lease/nsw/newcastle-region/adamstown/residential/house/6653403>

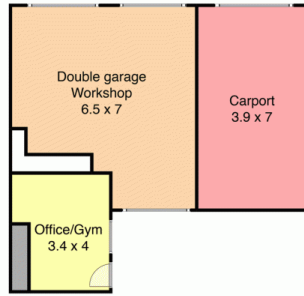
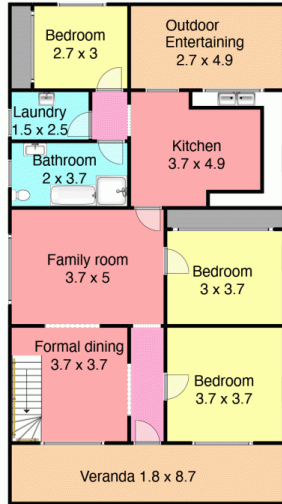


Kerry Robertson
02 4957 6166

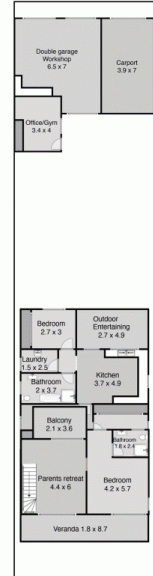
Upper Floor



Lower Floor



Back



Site Plan

Front

142 Victoria St, Adamstown