



**COVID-19 INSPECTION PROTOCOL**

PLEASE CONTACT AGENT TO DISCUSS ATTENDING OPEN HOUSE, WITH THE BELOW BEING REQUIRED

- QR Code scan in
- Social distance
- No touching  
Please ask staff to open anything you wish to inspect
- No personal contact - no hand shaking
- Wear a mask

Local Expert Knowledge **CRAWFORD REAL ESTATE**



## 107 Kings Road New Lambton NSW

2 1 1

Due to COVID restrictions INDIVIDUAL inspections ONLY.

Providing a variety of options for the astute buyer this very neat and tidy two bedroom Brick Veneer and Tile home, rebuilt by original owners in 1990 has been recently refurbished with new carpets, curtains and fresh decor in neutral colours.

Enter from the covered front veranda screened by established shrubs for privacy to the open plan living/dining, modern kitchen with gas upright stove, central tiled hallway to the 2 bedrooms and the advantage of a classic 3 way bathroom with separate wc, small bath and shower recess and vanity.

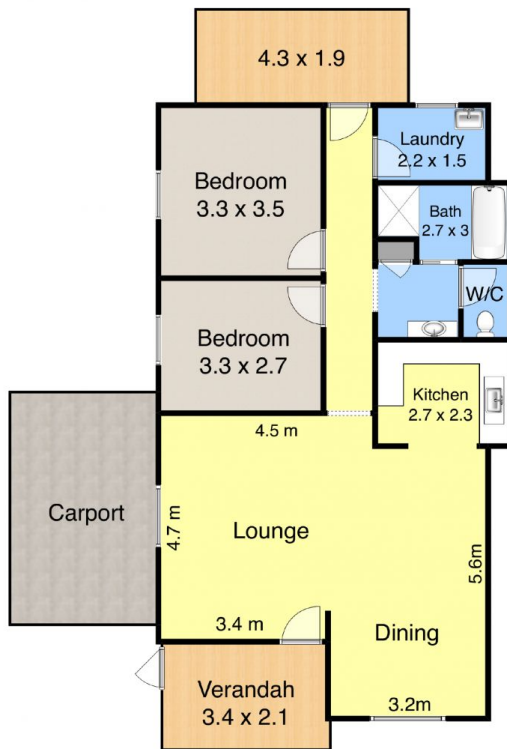
Discreetly positioned on a large level block of approx.. 860 sqm with 12.19m frontage Zoned R3 Medium Density with future potential (STCA). Side drive access thru the attached carport to the super sized backyard providing an idyllic haven for children to run and play with ample room for a vegie patch and orchard for fresh produce.

In this popular family friendly suburb this property is ideally

**Price** : \$ 860,000  
**Land Size** : 860 sqm  
**View** : <https://www.crawfordrealestate.com.au/sale/nsw/newcastle-region/new-lambton/residential/house/6654440>



**Margaret Jensen**  
02 4957 6166



Site Plan

107 Kings Road,  
New Lambton



Measurements are approximate and are to be used as a guide only

