

10 Portland Place New Lambton NSW

3 1 2

This delightful 3 bedroom period home is well presented and in a highly desirable location.

Updated throughout, the home offers:

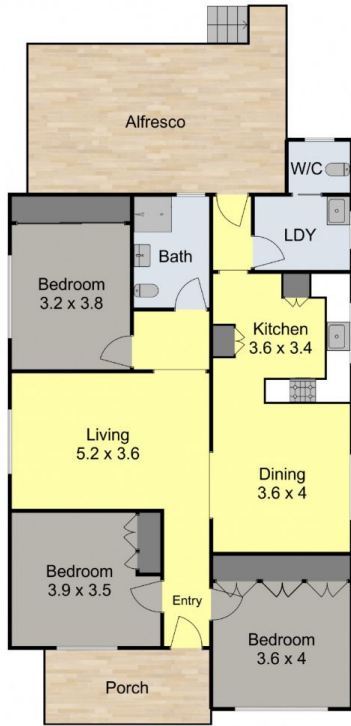
- *THREE bedrooms - all with generous built in wardrobes.
- *Central living room interconnecting to the air conditioned dining room and updated kitchen.
- *Modernised bathroom plus a 2nd wc off the laundry.
- * High ceilings, original timber floorboards and solid timber doors front and back featuring stunning original stained glass panels.
- *Sunny north aspect with covered front veranda to sit and enjoy a coffee. Fabulous large rear covered deck for al fresco entertaining and family gatherings overlooking the level grassed backyard.
- * Ideal sunny north aspect level block approx. with wide side driveway to the double garage complete with workshop for the home handyman. Secure yard for the children or family dog
- *Highly desirable location to enjoy the Village Lifestyle with choice of popular Cafes and restaurants, Boutique shops and the IGA.

Land Size : 563 sqm

View : <https://www.crawfordrealestate.com.au/lease/nsw/newcastle-region/new-lambton/residential/house/8020343>



Amanda Swan
02 4957 6166



Site Plan

10 Portland Place,
New Lambton



Measurements are approximate and are to be used as a guide only

