



**1/111 Hobart Road New Lambton NSW**

3 1 1

Discover this beautifully presented Townhouse in a prime position at the front of a boutique block of five. Ideal for those looking for a light, bright low-maintenance lifestyle. Conveniently located to enjoy the popular amenities of Lambton Park, Lambton Memorial Pool and the vibrant village atmosphere of either New Lambton or Lambton this home is perfect for executive couples, downsizers, investors or first home buyers alike.

**Price** : \$825,000 - \$875,000

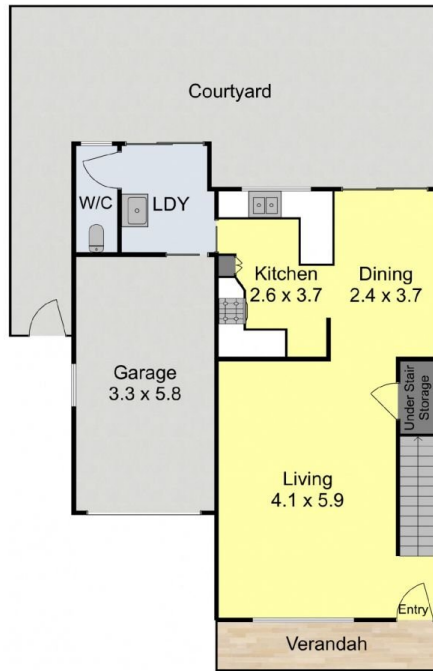
**View** : <https://www.crawfordrealestate.com.au/sale/nsw/newcastle-region/new-lambton/residential/townhouse/8047798>

**Features:**

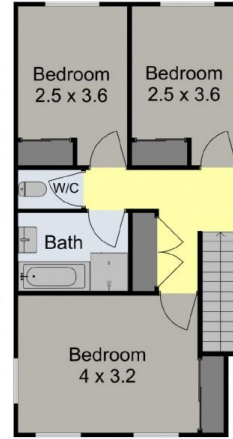
**DOWNSTAIRS:** The generously proportioned and versatile open-plan lounge and dining area welcomes you featuring high ceilings, reverse cycle air conditioning and a gas bayonet ensuring comfort all year round. The immaculate modern kitchen is well appointed with a gas cooktop electric oven and ample storage. The adjoining dining area opens to a fabulous sunny paved rear courtyard - ideal for al fresco meals and entertaining with the added advantage of side access. The spacious laundry off the kitchen has internal access to the generous single garage with auto door for all weather convenience. A powder room off the laundry provides added convenience, especially when



**Margaret Jensen**  
02 4957 6166



Lower Level



Upper Level

1/111 Hobart Road,  
New Lambton



Measurements are approximate and are to be used as a guide only

