



10 Aldyth Street New Lambton NSW

4  2  2 

Set on one of New Lambton's premier streets with sensational sweeping views across Novocastrian Park to the harbour, city skyline, and coastline. This home offers 3 bedrooms PLUS a one bedroom self contained multi purpose flat

The main home on the entry level comprises THREE double bedrooms 2 with new built-in wardrobes and original bathroom. The kitchen offers dishwasher and 900mm new DeLongi stove for the serious home chef and breakfast area. Adjoining the kitchen is the dining room and spacious interconnecting living room featuring original decorative fireplace and Plantation Shutters.

The hallway provides internal access from the garage for convenience plus an attached carport and a second entry on the side. Perfect for those rainy day supermarket drop offs. The home features ducted air conditioning for your year round comfort and a gas bayonet for heating in the lounge room.

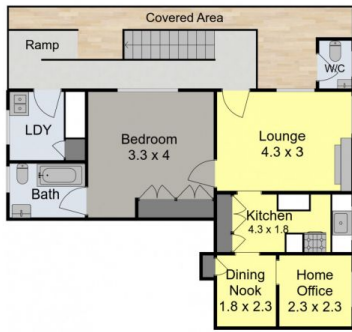
The granny flat on the lower level is ideal for the Au Pair, house guests or perhaps a teenager. Accommodation

Land Size : 490 sqm

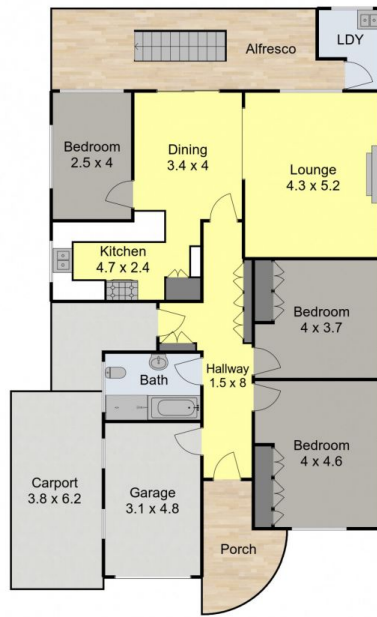
View : <https://www.crawfordrealestate.com.au/lease/nsw/newcastle-region/new-lambton/residential/house/8053385>



Amanda Swan
02 4957 6166



Lower Level



Upper Level



Site Plan

10 Aldyth Street,
New Lambton



Measurements are approximate and are to be used as a guide only

