



1/1 Hampton Way Maryland NSW

2 1 1

Nestled in a peaceful cul-de-sac, this freshly painted 2-bedroom duplex offers a rare blend of tranquility and modern living. With its serene mountain views and quiet surroundings, this home is a perfect retreat from the everyday hustle.

Type : Unit
Price : \$ 585,000
View : <https://www.crawfordrealestate.com.au/sale/nsw/newcastle-region/maryland/residential/unit/8125075>

Step inside from the covered front porch screened for privacy by an established Murraya Hedge to discover a spacious lounge featuring brand-new carpet and reverse-cycle air conditioning, offering a bright and comfortable space to relax. Proceed down the hallway to the open plan dining and modern kitchen with sliding door access to the rear private paved courtyard.

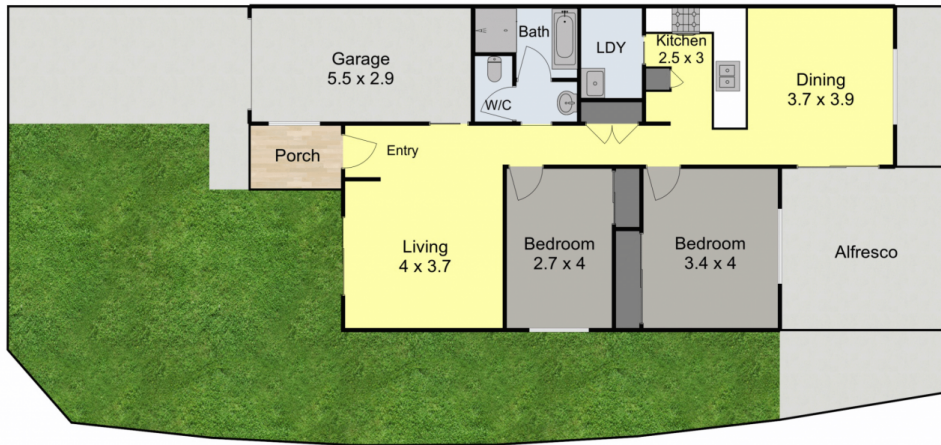


Margaret Jensen
02 4957 6166

Both bedrooms are generously sized and come with built-in wardrobes, offering plenty of organised storage. The villa's well-designed three-way bathroom, complete with a separate bath, shower, toilet, and vanity, allows multiple people to use the space simultaneously with ease.

Outside, enjoy a private outdoor patio perfect for unwinding

[For full version visit the website](https://www.crawfordrealestate.com.au)



1/1 Hampton Way,
Maryland



Measurements are approximate and are to be used as a guide only

CRAWFORD
REAL ESTATE